



SCISSORS

STABILIZER-MEDIUM TEARAWAY

FLEECE, INTERLOCK KNIT, COTTON

MINKY, VELOUR, TERRY CLOTH

WATER SOLUBLE STABILIZER

POLYFIL

SCOTCH TAPE

NEEDLE AND THREAD

4X4 HOOP MAKES A 4" X 3" PILLOW

5X7 HOOP MAKES A 7" X 5" PILLOW

6X10 HOOP MAKES A 9" X 6" PILLOW

8X8 HOOP MAKES A 8" X 6.5" PILLOW

8X12 HOOP MAKES A 11" X 8" PILLOW





LOAD PART 1 AND STITCH THE DIE LINE ON A PIECE OF STABILIZER



COVER THE EARS DIE LINE WITH TWO PIECES OF FABRIC RIGHT SIDES TOGETHER. I AM USING ONE PIECE OF WHITE MINKY FOR THE INNER EAR AND BROWN SHORT PILE FUR FOR THE OUTER EAR



STITCH THE TACK DOWN FOR THE EARS.



TRIM THE RIGHT SIDE OF THE EAR FABRIC CLOSER TO THE TACK DOWN LINE SO IT WILL NOT BE IN THE WAY OF THE TAIL DIE LINE



STITCH THE DIE LINES FOR THE TAIL



COVER THE ZIG ZAG LINE AND UPPER HALF OF THE RECTANGLE WITH A PIECE OF FABRIC RIGHT SIDE UP AS SHOWN.



STITCH A TACK DOWN LINE. THEN TRIM NEXT TO THE TACK DOWN LINE ABOUT 1/8- 1/4" AS SHOWN



PLACE ANOTHER PIECE OF FABRIC RIGHT SIDE UP SO IT COVERS THE BOTTOM HALF OF THE RECTANGLE AND ALSO THE ZIG ZAG LINE



STITCH A ZIGZAG TACK DOWN LINE



TRIM THE WHITE FABRIC CLOSE TO THE TACK DOWN LINE AS SHOWN



COVER WITH WATER SOLUABLE STABILIZER AND STITCH THE ZIGZAG SATIN STITCH. AFTER IT STITCHES, YOU CAN REMOVE THE WATER SOLUABLE STABILIZER FROM THE FABRIC.



GENTLY PEEL UP THIS PANEL OF FABRIC FROM THE STABILIZER ON THE ZIG ZAG LINE AS SHOWN. WE NEED TO REMOVE THE FABRIC FROM THE STABILIZER BUT KEEP USING THE STABILIZER





NOW THE FABRIC PANEL HAS BEEN COMPLETELY REMOVED FROM THE STABILIZER. I LIKE TO TAPE A SCRAP PIECE OF STABILIZER OVER WHERE THE ZIG ZAG WAS TO MEND THE STABILIZER TO KEEP WORK. SET THE FABRIC PANEL WITH THE ZIGZAG ASIDE.



LET'S DO THAT AGAIN. PLACE ANOTHER PIECE OF FABRIC RIGHT SIDE UP OVER THE ZIG ZAG LINE AND TOP HALF.



STITCH A ZIGZAG TACK DOWN LINE ON THE FABRIC AND THEN TRIM THE FABRIC 1/8-1/4" FROM THE TACK DOWN AS SHOWN



NOW COVER THE LOWER HALF WITH FABRIC RIGHT SIDE UP MAKING SURE TO COVER THE ZIG ZAG TACK DOWN LINE.



STITCH A ZIGZAG TACK DOWN LINE.



TRIM THE WHITE FABRIC CLOSE TO THE ZIGZAG TACK DOWN AS SHOWN.



COVER THE ZIG ZAG WITH WATER SOLUABLE STABILIZER



STITCH THE SATIN STITCH FOR THE ZIG ZAG AND THEN REMOVE THE WATER SOLUABLE STABILIZER. ALSO STITCH AN ALL OVER TACK DOWN LINE AROUND THE TAIL (NOT SHOWN)



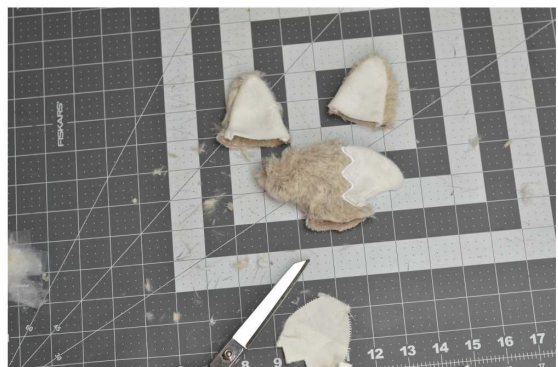
TAKE THE FIRST FABRIC PANEL WE CREATED EARLIER AND PLACE IT RIGHT SIDE DOWN ALIGNING THE ZIGZAGS TO MATCH AS SHOWN



TAPE THE LOOSE FABRIC PANEL IN PLACE OVER THE TAIL



STITCH THE FINAL TACK DOWN LINE



UNHOOP THE TAIL AND EARS AND CUT THEM OUT CLOSE TO THE TACK DOWN LINES. THEN TURN THEM RIGHT SIDE OUT.





LOAD PART 2 OF THE PILLOW AND STITCH THE DIE LINE ON A PIECE OF STABILIZER. THEN COVER THE DIE LINE WITH A PIECE OF FABRIC RIGHT SIDE UP AS SHOWN. I AM USING A SHANNON MINKY LUXE FUR



STITCH THE TACK DOWN LINE



STITCH THE DIE LINE FOR THE FACE



COVER THE FACE WITH A PIECE OF FABRIC RIGHT SIDE UP



TAPE IN PLACE



STITCH THE TACK DOWN LINE FOR THE FACE



TRIM AROUND THE FACE TACK DOWN LINE CLOSELY AS SHOWN. THEN COVER THE FACE WITH WATER SOLUABLE STABILIZER



STITCH THE SATIN STITCH FOR THE FACE AND THE MARKINGS ON THE FOREHEAD



ALSO STITCH THE NOSE, THE LASHES, THE EYES, THE HIGHLIGHTS ON THE EYES. ALSO STITCH THE DIE LINE FOR THE EARS.



DO NOT FOLD THE EARS. JUST TAPE THEM RIGHT SIDE DOWN OVER THE EAR DIE LINES AS SHOWN



STITCH THE TACK DOWN FOR THE EARS



STITCH THE DIE LINE FOR THE TAIL





PLACE THE OPEN END OF THE TAIL OVER THE DIE LINE AND TAPE IT IN PLACE



STITCH THE TACK DOWN FOR THE TAIL. THEN MAKE SURE THAT YOU TAPE THE REST OF THE TAIL SO IT WILL BE INSIDE THE FINAL TACK DOWN LINE WITHIN THE OUTLINE OF THE PILLOW TO PREVENT IT FROM GETTING CAUGHT IN THE STITCHING.



COVER THE PILLOW WITH ANOTHER PIECE OF FABRIC RIGHT SIDE DOWN



TAPE THE FABRIC SMOOTH AND FLAT



STITCH THE FINAL TACK DOWN LINE AS SHOWN. NOTE THAT THERE WILL BE A GAP LEFT IN THE STITCHING.



UNHOOP AND REMOVE THE STABILIZER. TRIM THE FABRIC ABOUT 1/4" FROM THE TACK DOWN LINE. BE SURE TO LEAVE A 1/2" TAB OF EXTRA FABRIC WHERE THE GAP IN THE STITCHING IS.





TURN THE PILLOW RIGHT SIDE OUT.



STUFF THE PILLOW AS WELL AS THE TAIL WITH POLYFIL.



ONCE YOU HAVE STUFFED IT TO YOUR LIKING, USE A NEEDLE AND THREAD TO CLOSE THE GAPS IN THE TAIL AND PILLOW WITH A LADDER STITCH AND YOU ARE ALL DONE. THESE PILLOWS ARE GREAT FOR PROPING UP BOTTLES OR FOR DOLL PILLOWS.